

# PETRASSI HALL

## TECHNICAL SHEET

### **STAGE**

WIDTH 20mt– DEPTH 8mt - CLEARANCE STAGE FLOOR TO CEILING 6,7mt

HIGH FROM PARTERRE 1mt

THE MAXIMUM LOAD TO THE STAGE FLOOR IS 400Kg/sqm

AVAILABLE CONFIGURATIONS:

### **THEATRICAL**

PROSCENIUM OPENING 12mt – BLACK BACKDROP or WHITE PVC BACKDROP 10mt x 8mt SUITABLE FOR  
FRONTAL VIDEO PROJECTION – BLACK FELT THE FLOOR

6 BLACK LEGS (3 EACH SIDE)

### **WIDE OPEN**

PROSCENIUM OPENING 20mt – BLACK BACKDROP or WHITE PVC BACKDROP 10mt x 8mt SUITABLE FOR  
FRONTAL VIDEO PROJECTION – BLACK FELT ON THE FLOOR - BLACK BOX

IN THIS CONFIGURATION TWO STAIRS FROM THE STALLS AREA ARE AVAILABLE TO ACCESS THE STAGE

***SEE STAGE PLAN AND SECTION – ATTACHMENT 1 – 2 – 3 – 4***

### **AUDIO EQUIPMENT**

#### **PA**

#### **LEFT + RIGHT FLY:**

2 x12 L'ACOUSTICS KARA II

#### **FRONT FILL:**

6 L'ACOUSTICS X8

#### **DOWN FILL LEFT + RIGHT:**

2 x 3 L'ACOUSTICS KS28

#### **LOUDSPEAKER MANAGER SYSTEM**

2 MEYER SOUND GALAXY 408

#### **FoH**

1 SOUND DESK DIGICO SD7 QUANTUM 96in / 32out

1 SOUND DISTRIBUTOR 12 Ch

1 HD RECORDER TASCAM SSR 200

1 CD PLAYER

1 UPS APC

INTERCOM SYSTEM WIRELESS 1 MASTER STATION + 5 BELT PACK + HEADPHONES

**NOTE: THE PATH OF MULTICORDE IS ABOUT 50mt LONG**

## **MONITOR SYSTEM**

1 MIXER DIGICO QUANTUM 338 96in / 32out  
10 MONITOR WEDGE MEYER SOUND UM-1P  
6 IEM SHURE PSM 1000 + SHURE P10-R  
2 SIDEFILL L'ACOUSTICS ARCS

## **MICROPHONES**

A COMPLETE SET OF DI AND MICROPHONES (DYNAMIC AND CONDENSER / WIRED AND WIRELESS)  
IS AVAILABLE. PLEASE CONTACT [allestimenti@musicaperroma.it](mailto:allestimenti@musicaperroma.it) FOR MORE DETAILS

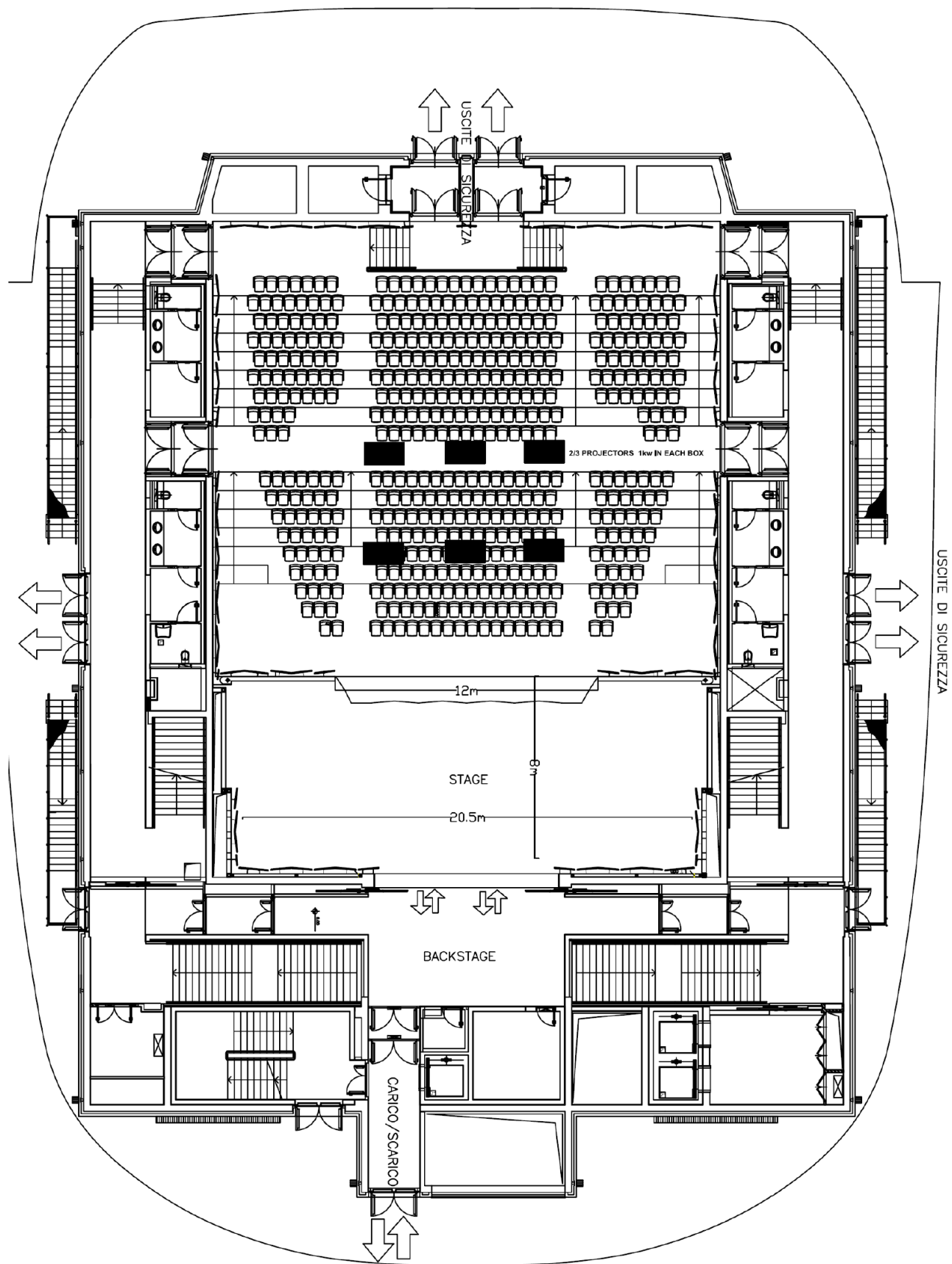
## **LIGHTING SYSTEM**

15 CHAUVET MAVERICK SILENS 1x PROFILE  
5 CHAUVET MAVERICK SILENS 2x PROFILE – *hung above the stalls*  
4 PROFILE ETC S4 25°-50° 750W - *@ FoH*  
1 CONSOLLE grandMa2 Light  
2 Universes DMX 512 - *from FoH to stage*  
***SEE LIGHT PLAN – ATTACHMENT 5***

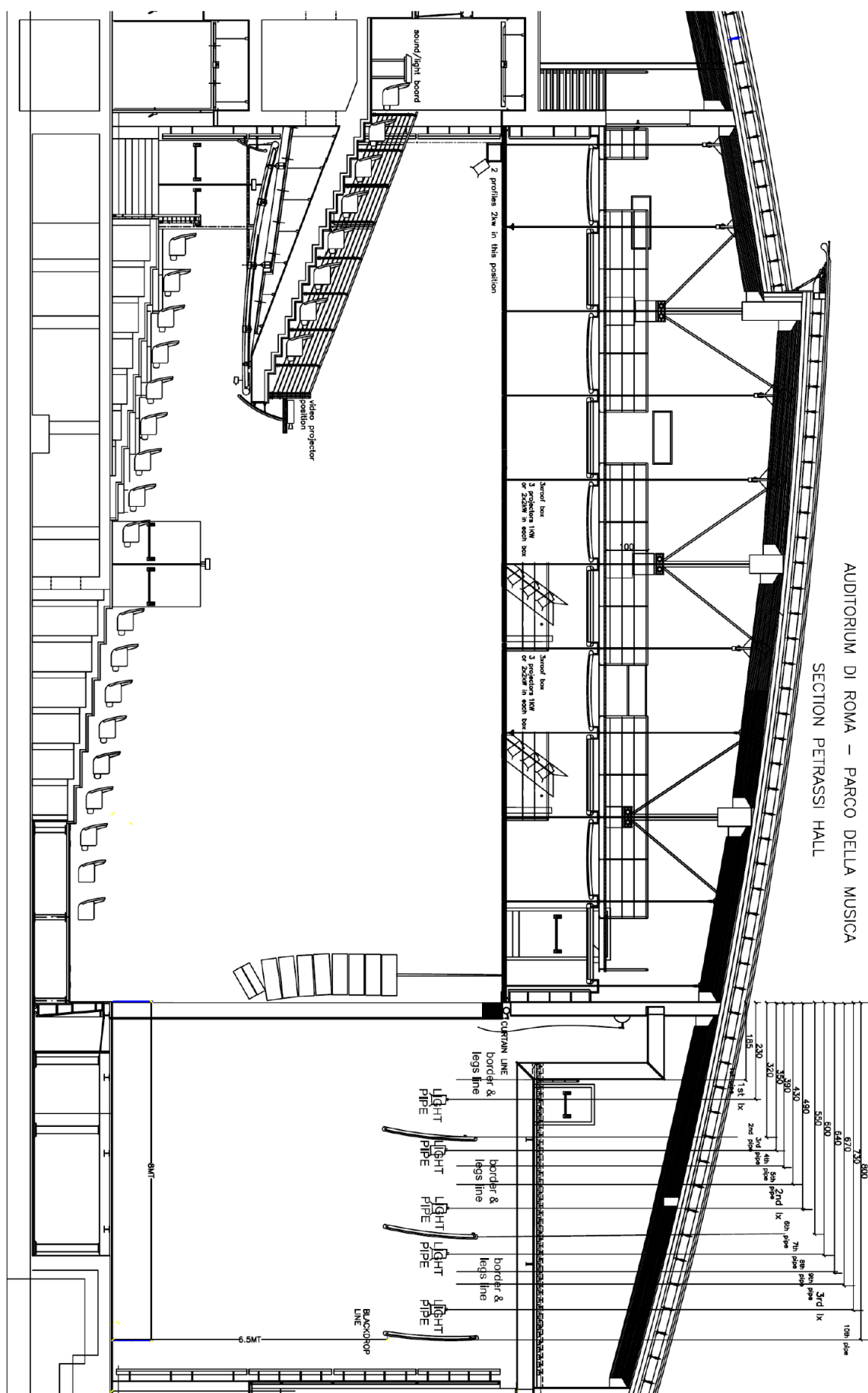
## **AVAILABLE POWER SUPPLY**

USL 1x 63 Amp 380V (3 phases)  
FoH 1x 63 Amp 380V (3 phases)

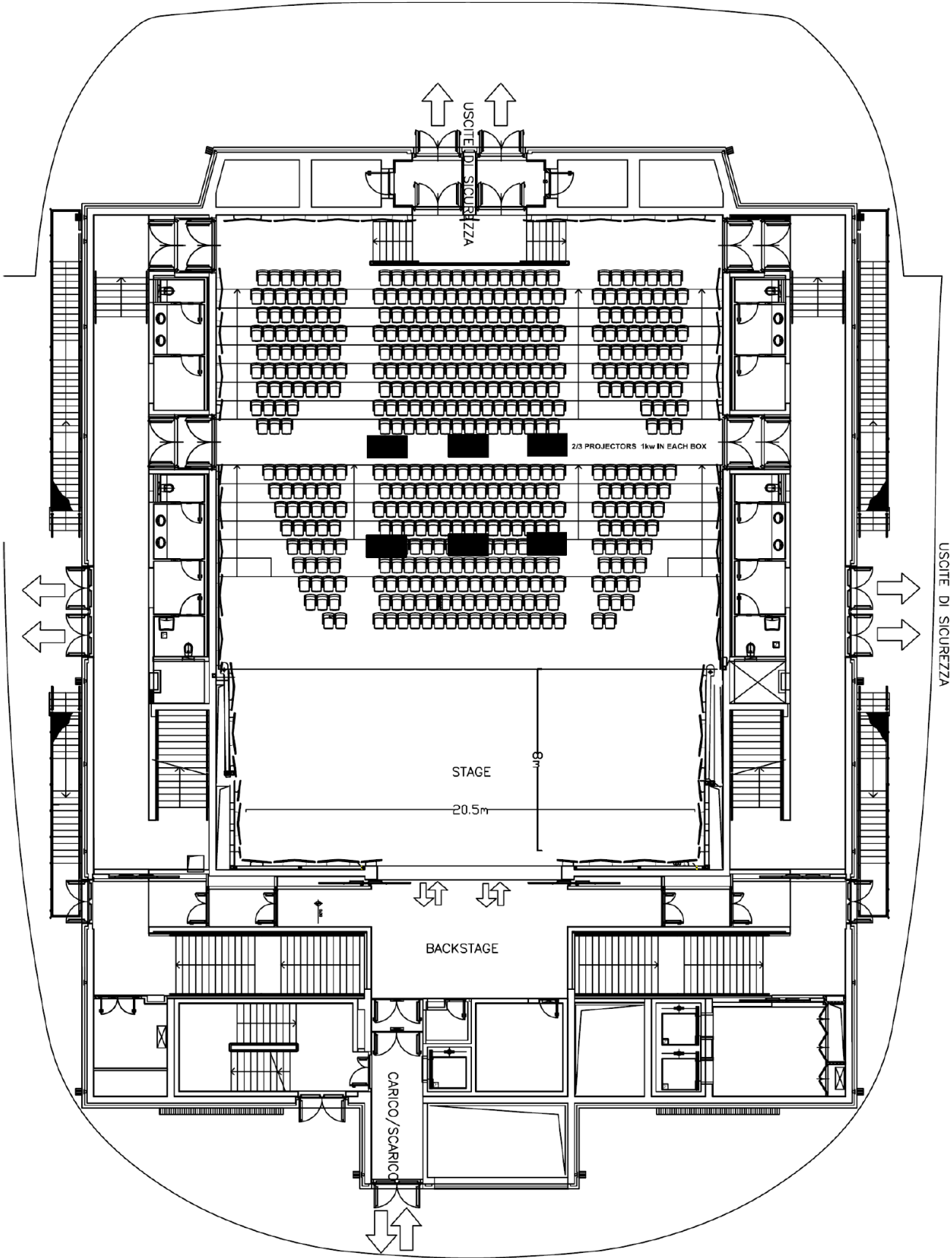
ATTACHMENT 1 – STAGE PLAN THEATRICAL CONFIGURATION



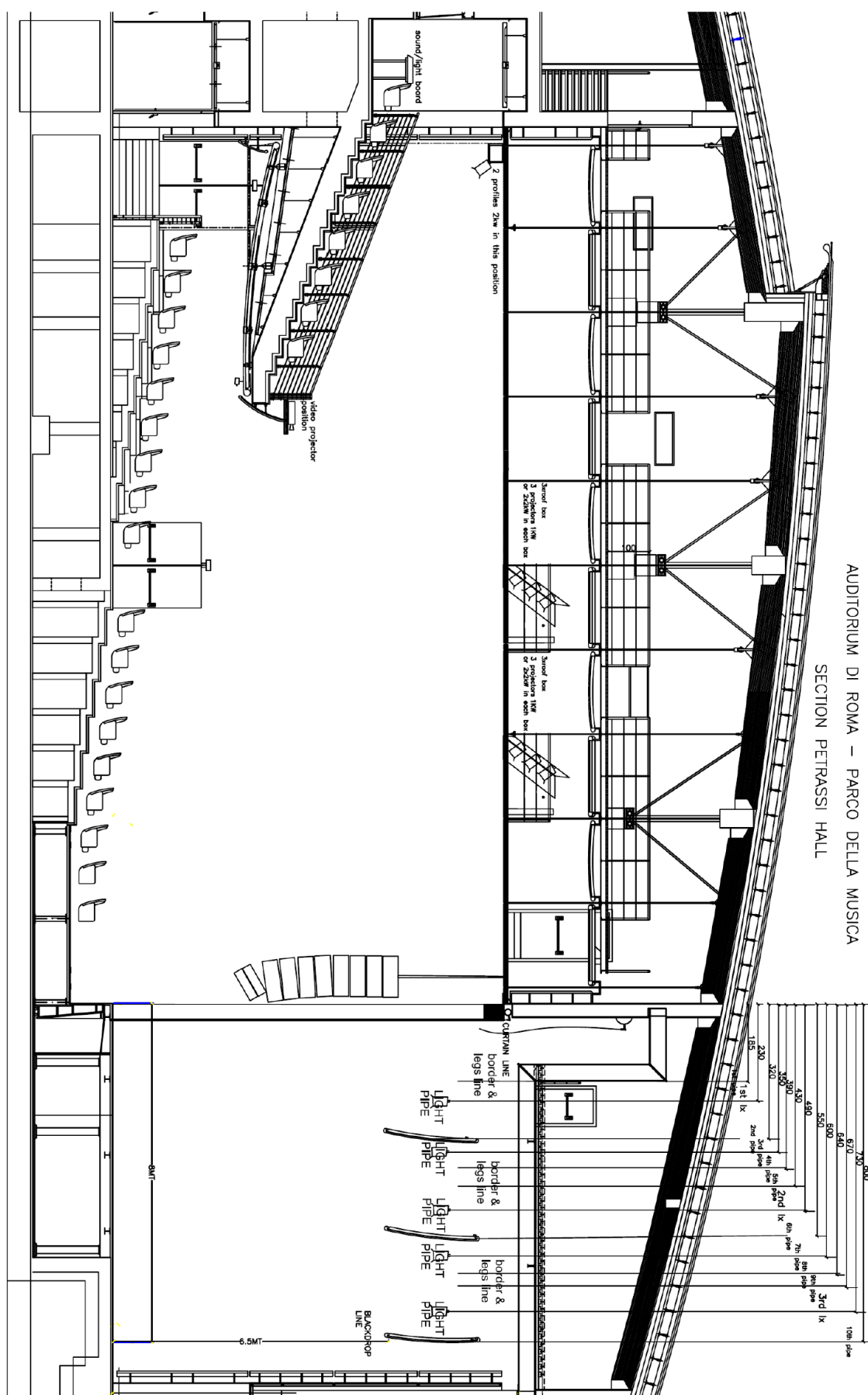
AUDITORIUM DI ROMA – PARCO DELLA MUSICA  
SECTION PETRASSI HALL



ATTACHMENT 3 – STAGE PLAN WIDE OPEN CONFIGURATION




**ATTACHMENT 4 – STAGE SECTION WIDE OPEN CONFIGURATION**




ATTACHMENT 5 – LIGHT PLAN

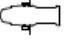
**LEGENDA:**



5 X MAVERICK 2  
SILENS PROFILE



15 X MAVERICK 1  
SILENS PROFILE



4 X PROFILE ETC  
ZOOM 25 - 50°

