

# PETRASSI HALL

## SCHEDA TECNICA

### SPAZIO SCENICO

LARGHEZZA 20mt – PROFONDITÀ 8mt - ALTEZZA TRUSS DAL PALCO 6,7mt

ALTEZZA DALLA PLATEA 1mt

MAX CARICO APPLICABILE 400Kg/sqm

CONFIGURAZIONI DISPONIBILI:

### TEATRALE

APERTURA PROSCENIO 12mt – FONDALE NERO oppure FONDALE IN PVC BIANCO PER PROIEZIONE

FRONTALE 10mt x 8mt – FELTRO NERO SUL PIANO DEL PALCOSCENICO

QUINTATURA ALL'ITALIANA: 6 QUINTE NERE (3 PER LATO)

### APERTA

APERTURA PROSCENIO 20mt – FONDALE NERO oppure FONDALE IN PVC BIANCO PER PROIEZIONE

FRONTALE 10mt x 8mt – FELTRO NERO SUL PIANO DEL PALCOSCENICO - QUINTATURA ALLA TEDESCA

IN QUESTA CONFIGURAZIONE SONO DISPONIBILI DUE SCALE CHE DALLA PLATEA ACCEDONO AL PALCO

***VEDI PIANTA E SEZIONE – ALLEGATI 1 – 2 – 3 – 4***

### MATERIALE AUDIO

#### **PA**

#### **LEFT + RIGHT FLY:**

2 x 12 L'ACOUSTICS KARA II

#### **FRONT FILL:**

6 L'ACOUSTICS X8

#### **DOWN FILL LEFT + RIGHT:**

2 x 3 L'ACOUSTICS KS28

#### **LOUDSPEAKER MANAGER SYSTEM**

2 MEYER SOUND GALAXY 408

#### **FoH**

1 SOUND DESK DIGICO SD7 QUANTUM 96in / 32out

1 DISTRIBUTORE AUDIO 12 Ch

1 HD RECORDER TASCAM SSR 200

1 CD PLAYER

1 UPS APC

INTERCOM SYSTEM WIRELESS 1 MASTER STATION + 5 BELT PACK + HEADPHONES

**NOTA: IL PERCORSO DEL MULTICORDE È LUNGO CIRCA 50mt**

## **MONITOR**

1 MIXER DIGICO QUANTUM 338 96in / 32out  
10 MONITOR WEDGE MEYER SOUND UM-1P  
6 IEM SHURE PSM 1000 + SHURE P10-R  
2 SIDEFILL L'ACOUSTICS ARCS

## **MICROFONI**

DISPONIBILE SET COMPLETO DI MICROFONI (DINAMICI E CONDENSATORE / A CAVO E WIRELESS)  
PER DETTAGLI SCRIVERE A [allestimenti@musicaperroma.it](mailto:allestimenti@musicaperroma.it)

## **MATERIALE LUCI**

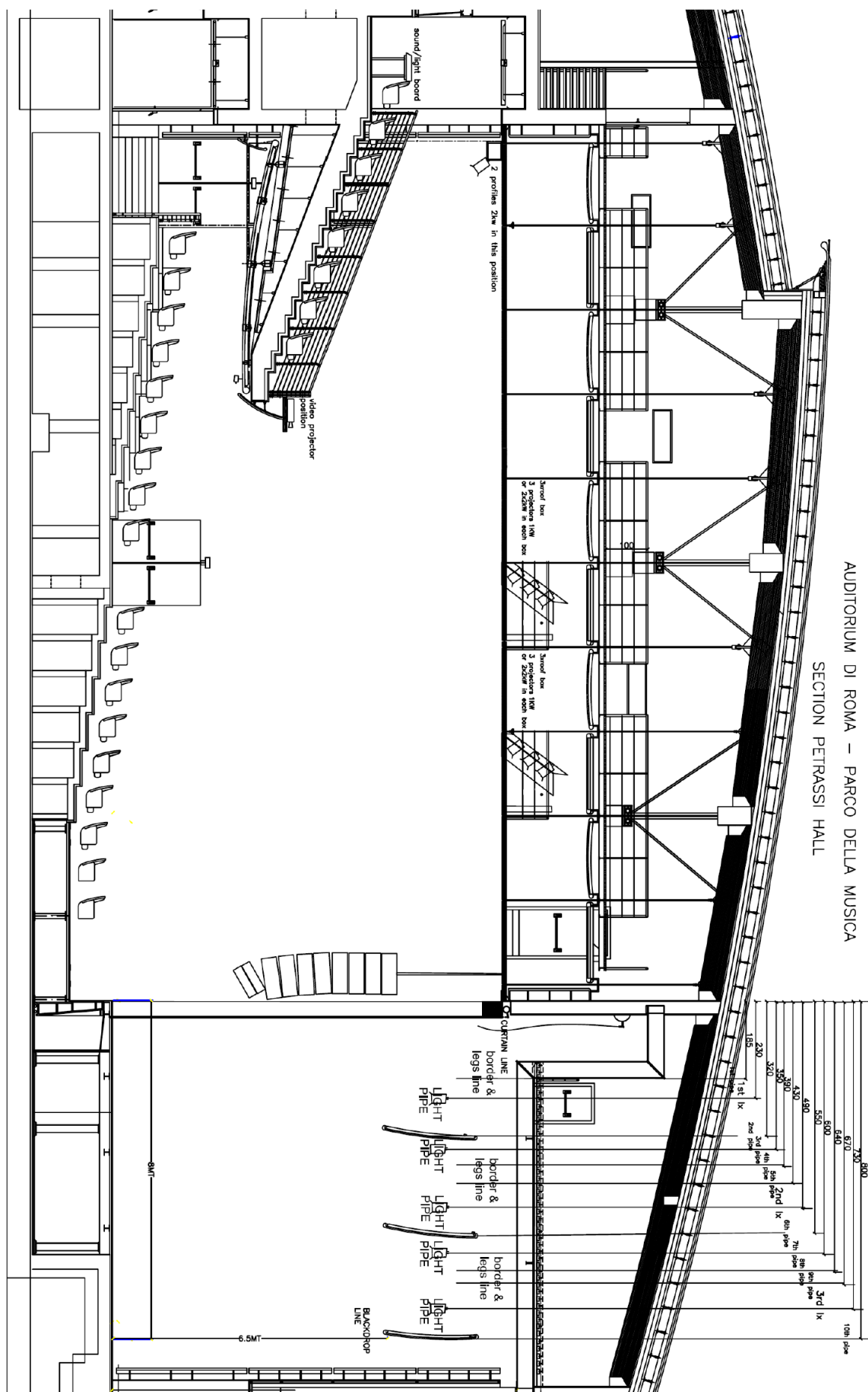
15 CHAUVET MAVERICK SILENS 1x PROFILE  
5 CHAUVET MAVERICK SILENS 2x PROFILE – montati sopra la platea  
4 PROFILE ETC S4 25°-50° 750W - @ FoH  
1 CONSOLLE grandMa2 Light  
2 Universi DMX 512 - da FoH al palco  
**VEDI LIGHT PLAN – ALLEGATO 5**

## **FORNITURE CORRENTE**

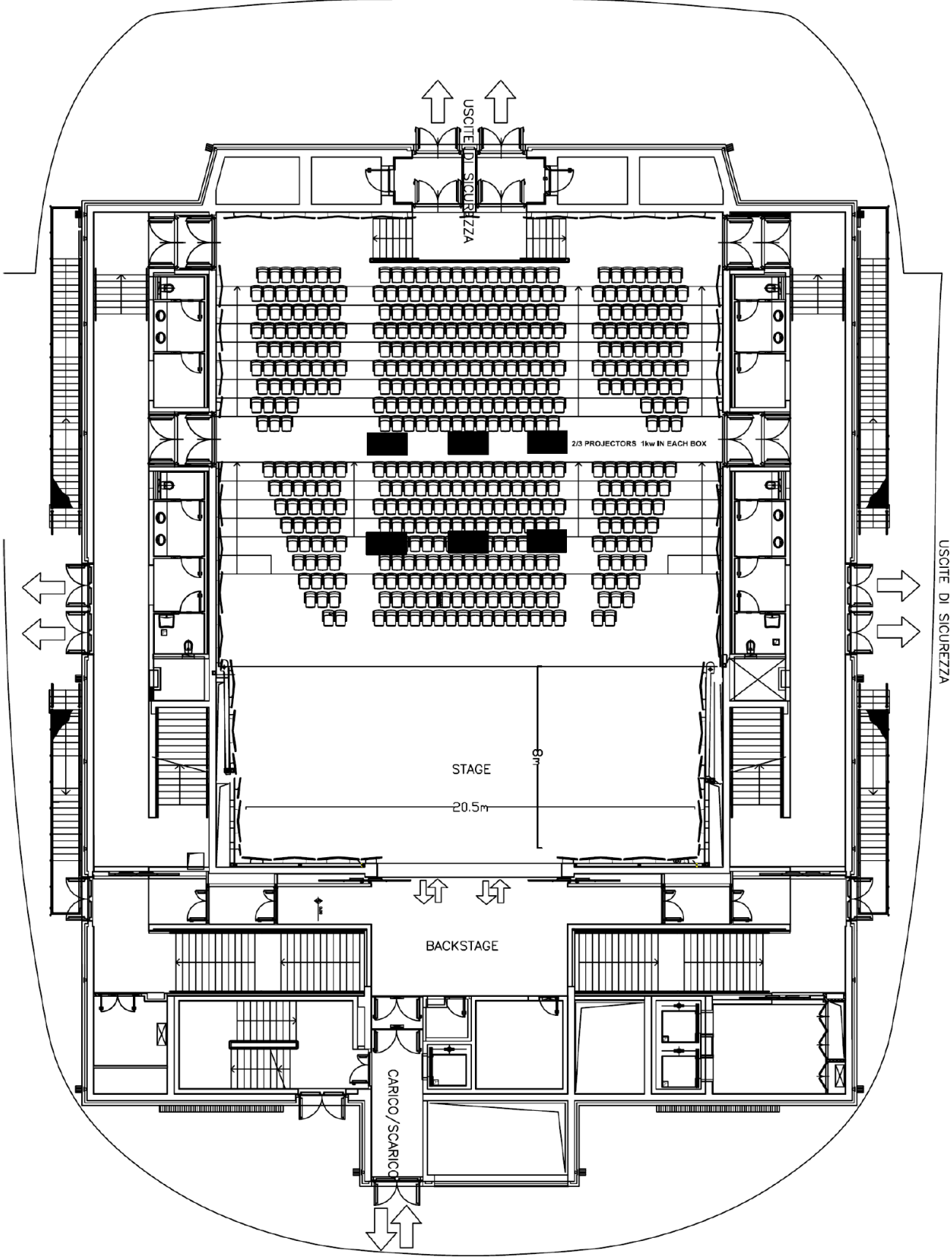
PALCO 1x 63 Amp 380V  
FoH 1x 63 Amp 380V

This architectural floor plan illustrates the layout of a theater hall and its backstage area. The hall is a large rectangular space with a stage at the bottom, measuring 20.5m in width and 8m in depth. The stage is labeled "STAGE" and "20.5m". The backstage area, labeled "BACKSTAGE", is located directly behind the stage. The main seating area is divided into three sections by two aisles, with a total width of 12m. The seating is arranged in rows, with a total of 213 projectors, 1kw in each box, indicated by a label "213 PROJECTORS 1kw IN EACH BOX". The plan also shows various exits, labeled "USCITE DI SICUREZZA", and a loading/unloading area, labeled "CARICO/SCARICO". The entire theater complex is enclosed within a large oval boundary.

AUDITORIUM DI ROMA – PARCO DELLA MUSICA  
SECTION PETRASSI HALL




ALLEGATO 3 – PIANTA PALCO – CONFIGURAZIONE APERTA






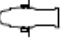
LEGENDA:



5 X MAVERICK 2  
SILENS PROFILE



15 X MAVERICK 1  
SILENS PROFILE



4 X PROFILE ETC  
ZOOM 25 - 50°

